



# ALASKA LAND EXCURSIONS





**BEAR VIEWING — LAKE CLARK**

You're a bear country bound adventurer. Coast through the mountains of Lake Clark National Park by plane. After a beach landing, venture out to see the bears in their natural habitat. Set up camp and enjoy an included picnic lunch in the wilderness.

*Duration: 8 hours including transfers*

**\$785 per person**

**Additional option: Bear Viewing – Katmai & Brooks Falls - \$895 per person**  
This Land Excursion\* can be booked with Cruisetours 1A, 3A, 5A & 9A

**BIG SWIG: ALASKA'S CRAFT BEER TOUR**

Sip your way through the Anchorage craft beer scene. Join your 'hoperator' on an off-the-beaten-path tour of Anchorage's best breweries. Get to know the brewers and beers on an adventure crafted for the ultimate beer lover. Duration: 3.5 hours

**\$99 per person**

This Land Excursion\* can be booked with Cruisetours 1A, 3A, 5A, 9A & 12A

**GLACIER AND WILDLIFE FLIGHTSEEING TOUR**

Soar over the hanging glaciers of Knik Glacier and the winding Knik Glacier Gorge. Discover how the ice has shaped the surroundings. Get up close with the locals, including mountain goats and moose, while you enjoy snacks at a lakeside inn.

**\$263 per person for 1-1/2 hours; or**

**\$315 per person for 2-1/4 hours with Lakeside Stop**

**\$114 per person for 30 minutes Anchorage Flightseeing Safari**

**\$376 per person for 2-1/2 hours Prince William Sound Glacier Flightseeing Tour**

**\$520 per person for 3 hours Denali & Glacier Landing**

This Land Excursion\* can be booked with Cruisetours 6A, 7A & 8A - Code: RUST1



### ALPINE HIKE ON ALYESKA GLACIER

Adventure is calling. Board the Alyeska Tram at Hotel Alyeska for a scenic ride to the top of Mt. Alyeska, 2,300 feet above sea level. Gear up for an 800' elevation gain, 2-hour guided glacier hike. And explore a scenic ridgeline with views of seven glaciers in Girdwood Valley.

Note: This is a moderate to strenuous glacier hike.

**\$139 per adult - Age 12 minimum.**

This Land Excursion\* can be booked with Cruisetours 3A, 3B & 5A - Code: PATH2

### SCENIC FLOAT

Float along Portage Valley glaciers on a panoramic rafting adventure.

**\$89 per adult; \$69 per child**

This Land Excursion\* can be booked with Cruisetours 3A, 3B, 5A & 5B - Code: CADV1

### HELICOPTER DOG SLED TOUR

There's much (and mush) to see on this Last Frontier adventure. Go from helicopter to dog sled at our alpine camp. Start off with a mush along a snow-covered glacier. Lead the way as you guide the sled yourself. End the tour selfie-style as you suit up in Iditarod racing gear for the perfect photo opp. You'll learn about Alaskan Huskies, including the legendary mushing Seavey family.

**\$519 per person**

**\$385 per person for 1 hour Helicopter Glacier Landing**

**\$270 per person for 30 mins Helicopter Glacier Flyer (no landing)**

This Land Excursion\* can be booked with Cruisetours 3A, 3B, 5A & 5B - Code: AAIR1



## DENALI FLYER

This is a wilderness triple feat. Fly to the remote western end of Denali National Park. Get a rare glimpse of Mt. Denali, Mt. Foraker and Mt. Hunter. All within six miles of the magnificent Kahiltna Glacier. Plus discover the climber's base camp at 7,200 feet on the southeast fork. (1 hour)

**\$301 per person**

This Land Excursion\* can be booked with Cruisetours 1A, 1B, 3A, 3B, 5A, 5B, 7A, 7B, 8A, 8B, 9A & 9B - Code: K2AV1

## MT. DENALI FLYER WITH GLACIER LANDING

This is a wilderness triple feat, plus a glacier landing. Fly to the remote western end of Denali National Park. Get a rare view of Mt. Denali, Mt. Foraker and Mt. Hunter, within six miles of the magnificent Kahiltna Glacier. Discover the climber's base camp at 7,200 feet on the southeast fork. Then take adventure up a notch with a glacier landing. (1.75 hours)

**\$396 per person**

This Land Excursion\* can be booked with Cruisetours 1A, 1B, 3A, 3B, 5A, 5B, 7A, 7B, 8A, 8B, 9A & 9B - Code: K2AV2

## SUMMIT TOUR WITH GLACIER LANDING

Tour the wilderness in a turbine aircraft. Take in views of the 500-mile Alaska Range from a climber's perspective. See Mounts Denali, Foraker and Hunter from 20,000 feet up. Plus take adventure to new heights with a glacier landing. (2 hours)

**\$473 per person**

This Land Excursion\* can be booked with Cruisetours 1A, 1B, 3A, 3B, 5A, 5B, 7A, 7B, 8A, 8B, 9A & 9B - Code: TAT1

## WILDERNESS JET BOAT TOUR

Ready, jet, go! Get to the heart of the wilderness by jet boat. This 20-mile journey along the riverbanks includes a half-mile nature walk to an authentic trapper's cabin. Wildlife, folklore, artifacts and stellar views make for a next-level Denali discovery.

**\$75 per adult; \$57 per child (2 hours)**

**\$130 per adult; \$98 per child for the Chulitna Gorge Tour (3 hours)**

**\$175 per adult; \$132 per child for the Devils Canyon Adventure Tour (5 hours)**

This Land Excursion\* can be booked with Cruisetours 1A, 1B, 3A, 3B, 5A, 5B, 7A, 7B, 8A, 8B, 9A & 9B - Code: MHAY1

## TALKEETNA RIVER FLOAT

Ready for a float with a view? Glide along the glacially fed, flat water (Class I) of the Talkeetna River. Go from swift and cold to calming and serene in one thrilling adventure. Enjoy views of Denali, spawning salmon, fresh water streams, and unique regional flora and fauna.

Good for all ages.

**\$75 per adult; \$49 per child**

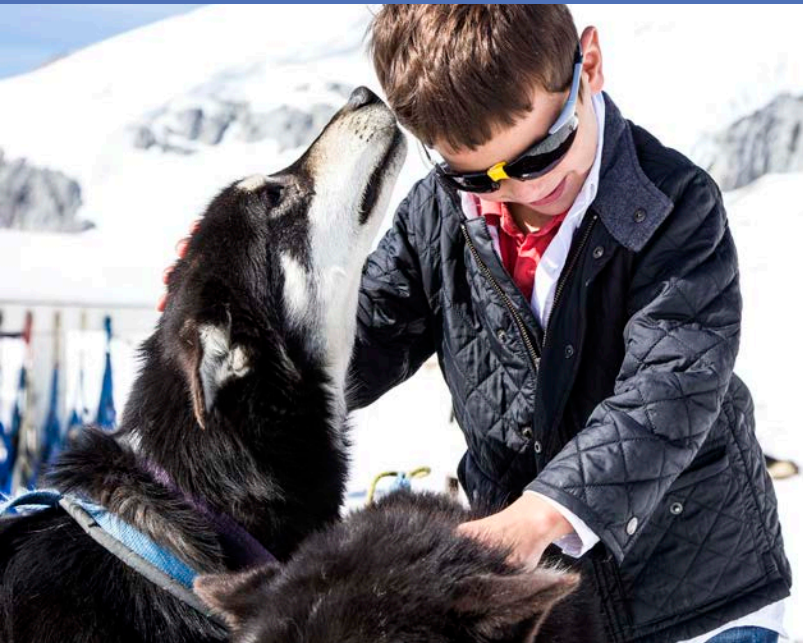
This Land Excursion\* can be booked with Cruisetours 1A, 1B, 3A, 3B, 5A, 5B, 7A, 7B, 8A, 8B, 9A & 9B - Code: DVRA1

## ZIPLINE TOUR

Venture to new heights on the northernmost canopy tour in North America. Soar above thrilling views of the Alaska Range and Denali Park. It's nine zip lines, three suspension bridges and one amazing adventure. Guests must be at least 10 years of age and weigh between 90 and 270 pounds.

**\$149 per adult; \$119 per child ages 10-12.**

This Land Excursion\* can be booked with Cruisetours 1A, 3A, 5A, 5B, 7A, 7B, 8A, 8B & 9B - Code - DZTz



## HUSKY HOMESTEAD

This is an immersive Iditarod adventure. Tour the homestead kennel of four-time Iditarod Champion Jeff King. You'll meet champion sled dogs, visit puppies and see summer training in action. 1-1/2 hour narrated kennel tour.

**\$59 per adult; \$39 per child**

This Land Excursion\* can be booked with Cruisetours 1A, 1B, 2A, 2B, 3A, 3B, 4A, 4B, 5A, 5B, 6A, 6B, 7A, 7B, 8A, 8B, 9A, 9B & 11A - Code: HUSK1

## DENALI PARK DINNER THEATER

Food, fun and frivolity. Take a timeless trip to another era in Denali National Park. Hear stories set to foot-stomping, knee-slapping music. And feast on an all-you-can-eat family style meal, including Alaskan salmon, BBQ ribs, potatoes, corn on the cob, baked beans, salad, sourdough rolls and a tasty dessert.

**\$75 per person; \$3750 per child**

This Land Excursion\* can be booked with Cruisetours 4A, 4B, 5A, 5B, 6A, 7A, 7B, 8A & 8B - Code: ARMK1

## GUIDED HIKE DENALI

Adventure peaks on an unforgettable guided hike in Denali Park, a 4-mile round-trip.

**\$99 per adult; \$50 per child**

This Land Excursion\* can be booked with Cruisetours 1A, 1B, 2A, 3A, 3B, 4A, 4B, 5A, 5B, 6A, 6B, 7A, 7B, 8A, 8B, 9A, 9B & 11A - Code: ARMK6

## WHITewater RAFTING THE NENANA RIVER

Ride a wave of thrills in Canyon Run. Experience Class III and IV rapids on an exciting Nenana River whitewater adventure.

**\$99 per person**

This Land Excursion\* can be booked with Cruisetours 1A, 1B, 2A, 2B, 3A, 3B, 4A, 4B, 5A, 5B, 6A, 6B, 7A, 7B, 8A, 8B, 9A, 9B & 11A - Code: DOC1

## WILDERNESS FLOAT TRIP ON THE NENANA RIVER

This is a fun-filled, floating adventure. Travel by raft 13 miles into the Alaskan wilderness. Plus explore the Nenana River and the scenic Wilderness Run. Perfect for families and beginning rafters.

**\$99 per person**

This Land Excursion\* can be booked with Cruisetours 1A, 1B, 2A, 2B, 3A, 3B, 4A, 4B, 5A, 5B, 6A, 6B, 7A, 7B, 8A, 8B, 9A, 9B & 11A - Code: DOC1

## FLY FISH IN DENALI FOR A HALF DAY

Cast off on an Alaska fly fishing expedition. Fish for arctic grayling and rainbow trout in the Denali wilderness.

**\$185 per person**

**License is \$20 Additional**

This Land Excursion\* can be booked with Cruisetours 1B, 2A, 4A, 4B, 5A, 5B, 6A, 7A, 7B, 8A, 8B, 9B & 11A - Code: DFFG1

## DENALI BY HELICOPTER!

Calling seekers and once-in-a-lifetime adventurers. Soar high above Mt. Denali by helicopter. Get a new perspective of wildlife, alpine glaciers, the Alaska Range and Mt. McKinley (Denali) from afar (weather dependent).

**\$411 – per person- 35 minutes Denali Excursion**

**\$525– per person- 70 minutes Denali Glacier Landing Expedition**

**\$599 per person- 3.5-4 hours Heli-Hiking Adventure**

**\$100 per person fee for guests weighing over 250 pounds.**

This Land Excursion\* can be booked with Cruisetours 1A, 1B, 2A, 2B, 3A, 3B, 4A, 4B, 5A, 5B, 6A, 6B, 7A, 7B, 8A, 8B, 9A, 9B & 11A - Code: ERA1 & ERA2

For Heli Hiking Only restricted to being booked with Cruisetour 8A - Code: ERA3

## FIXED WING IN DENALI

Visit North America's highest peak like the Bush pilots of Alaska. You'll follow the Alaska Range for an awe-inspiring view of Mt. Denali (weather dependent) during a 60-70 minute, fixed wing flightseeing journey.

**\$400 per adult; \$205 per child**

This Land Excursion\* can be booked with Cruisetours 1A, 1B, 2A, 2B, 3A, 3B, 4A, 4B, 5A, 5B, 6A, 6B, 7A, 7B, 8A, 8B, 9A, 9B & 11A - Code: DAIR1



### TUNDRA WILDERNESS TOUR

Tour the tundra on a 7-8 hour journey through Denali National Park and Preserve. Get up close with the park's inhabitants. And learn the history of the park road as you travel 53 miles into the wilderness. A snack box meal and beverage are included.

*(Upgrade offering on eligible Cruisetours from the included Denali Natural History Tour, a 4-5 hour tour traveling 17 miles into the park)*

**\$70 per adult; \$35 per child**

This Land Excursion\* can be booked with Cruisetours 1A, 1B, 2A, 2B, 3A, 3B, 5A, 5B, 7A & 7B

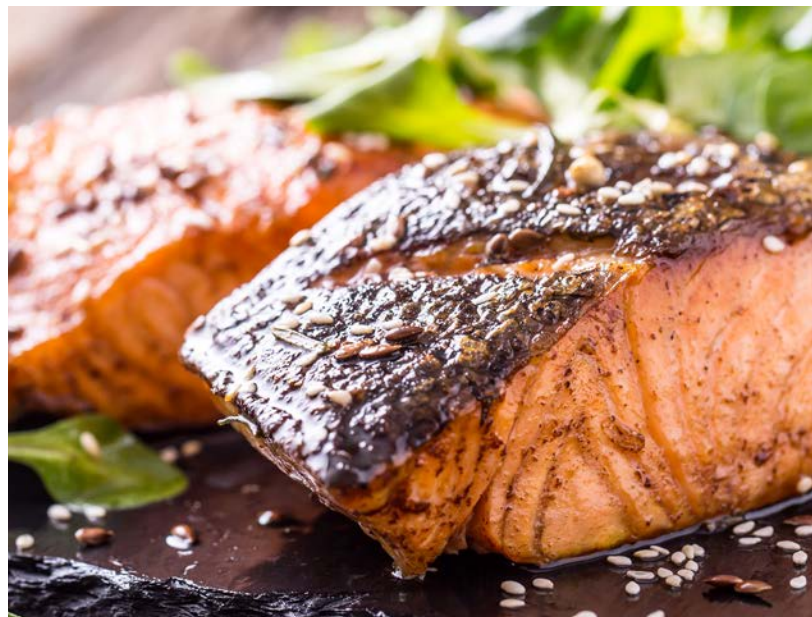
### DENALI ATV WILDERNESS ADVENTURE

You're a four-wheeling force of nature. Explore the scenic Alaskan wilderness on a single or side-by-side ATV. You'll cross several types of terrain — coal mining trails, rocky creek beds, hill-scaling, water and mud crossings — on this 10 mile, once-in-a-lifetime ride.

**\$115 per person with Single ATV.**

**\$175 per couple with side by side ATV. Double occupancy required.**

This Land Excursion\* can be booked with Cruisetours 1A, 1B, 2A, 2B, 3A, 3B, 4A, 4B, 5A, 5B, 6A, 6B, 7A, 7B, 8A, 8B, 9A, 9B & 11A - Code: CDATV1



**ARCTIC CIRCLE EVENING AIR ADVENTURE**

Explore Alaska on a land and air adventure. Go from the Arctic Circle to the Brooks Mountain Range. Ride the famed Dalton Highway to the remote wilderness community of Wiseman. See how the unique community lives. Return to Fairbanks by air and receive an official Arctic Circle Certificate at the end.

**\$474 per person includes shuttle fee**

This Land Excursion\* can be booked with Cruisetours 2A, 2B, 4A, 4B, 6A, 6B, 7A, 8A & 8B - Coe: NATC3

**FAIRBANKS SALMON BAKE**

Salmon. Cod. Ribs. You don't have to choose just one at this all-you-can-eat Alaskan feast. Walk it off with a stroll through Pioneer Park — an Alaskan theme park with historical buildings and shops.

**\$35 per adult; \$15 per child**

This Land Excursion\* can be booked with Cruisetours 2A, 2B, 4A, 4B, 6A, 6B, 7A, 8A & 8B - Code: AKSB1

**FAIRBANKS SALMON BAKE AND GOLDEN HEART REVUE SHOW**

Salmon. Cod. Ribs. You don't have to choose just one at this all-you-can-eat Alaskan feast. Walk it off with a stroll through Pioneer Park — an Alaskan theme park with historical buildings and shops. End the tour with a musical comedy about the gold rush and founding of Fairbanks.

**\$57 per person; \$26 per child**

This Land Excursion\* can be booked with Cruisetours 2A, 2B, 4A, 4B, 6A, 6B, 7A, 8A & 8B - Code: AKSB3



### WILDERNESS DOG SLED RIDE

This is a day in the life of Alaska adventure. See firsthand what it takes to be an Iditarod racing family and learn how they prepare both mushers and sled dogs. Plus tour the racing kennels, cuddle Huskie puppies and saddle up for a two-mile sled ride from the Seavey Homestead to the base of Resurrection Mountain.

**\$80 per adult; \$40 per child**

This Land Excursion\* can be booked with Cruisetours 6A, 6B, 7A & 7B - Code: IDID1

### STONEY CREEK CANOPY ADVENTURE

Nine zip lines. Three suspension bridges. A spiral staircase. And a rappel line. You'll do it all and then some on this three-hour thrill-seeking, Alaska adventure. All while being immersed in the Pacific Temperate Rainforest. *Duration: 3 hours*

**\$154 per adult; \$123 per child**

This Land Excursion\* can be booked with Cruisetours 6B, 7B & 10A

\*The featured land excursions are not guaranteed to be available on every Alaska Cruisetour departure. Land excursions must be booked directly with your Adventure Specialist during your Alaska Cruisetour vacation.